

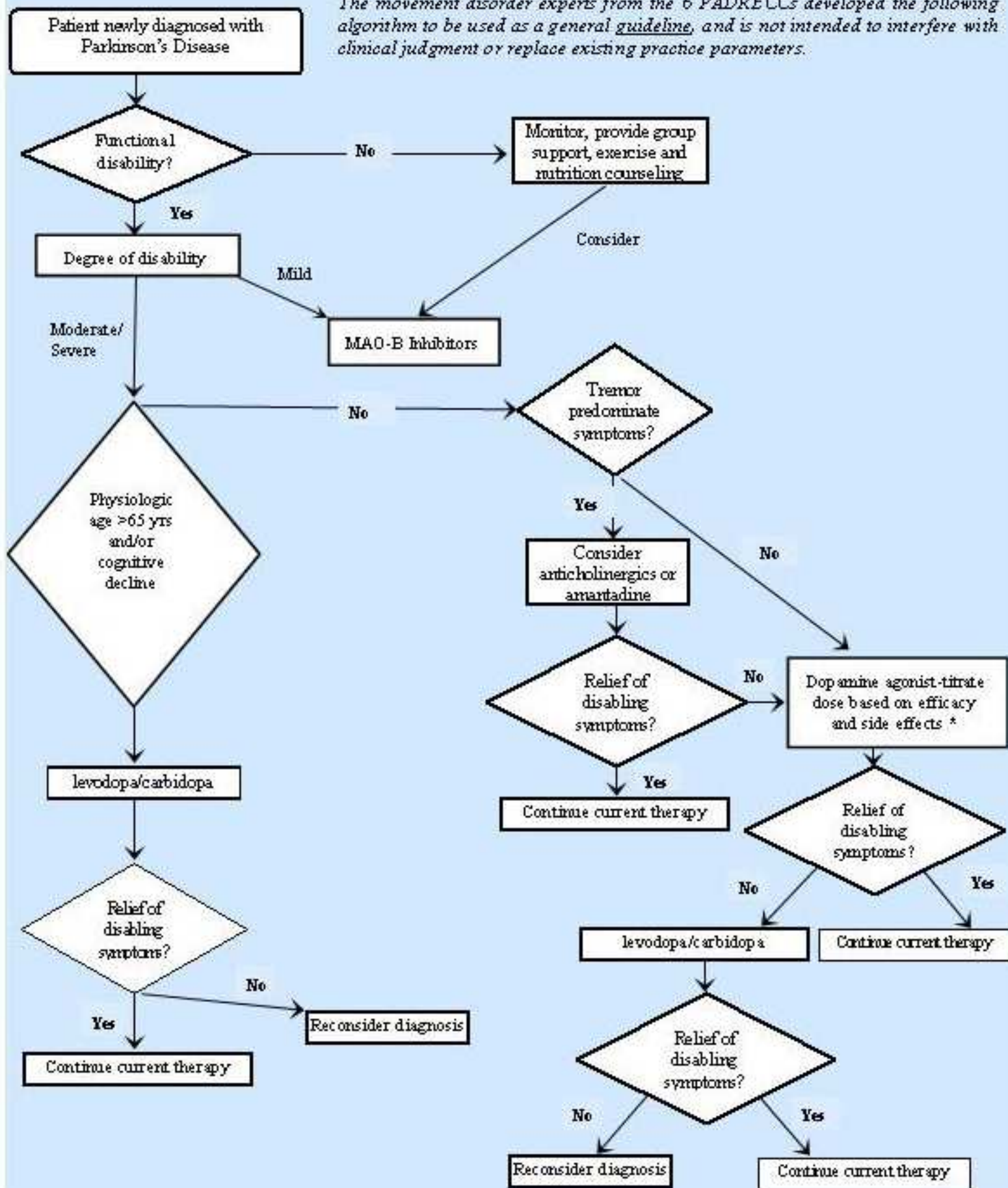


Parkinson's Disease

Quick Reference Guide for Initiating Therapy



The movement disorder experts from the 6 PADRECCs developed the following algorithm to be used as a general guideline, and is not intended to interfere with clinical judgment or replace existing practice parameters.



* Assess for history of Impulse Control Disorder—type behaviors (pathological gambling, eating, spending, sexual, etc) and consider using other agents if significant history and/or concerns exist; monitor for ICD symptoms periodically during dopamine agonist therapy

Please contact one of the six
Parkinson's Disease Research, Education and Clinical Centers (PADRECCs)
for additional information or to arrange a consult appointment

Philadelphia PADRECC:	215-823-5934 or 888-959-2323
Houston PADRECC:	713-794-7841
Portland / Seattle PADRECC:	503-721-1091 or 206-277-4560
Richmond PADRECC:	804-675-5931 or 800-784-8381 x5931
San Francisco PADRECC:	415-379-5530
West Los Angeles PADRECC:	310-478-3711 x48001

www.parkinsons.va.gov

The printing of this card was supported by an unrestricted educational grant provided by Teva Neuroscience, Inc.
Teva Pharmaceuticals, Inc. had no input on content development.
Updated January 2010