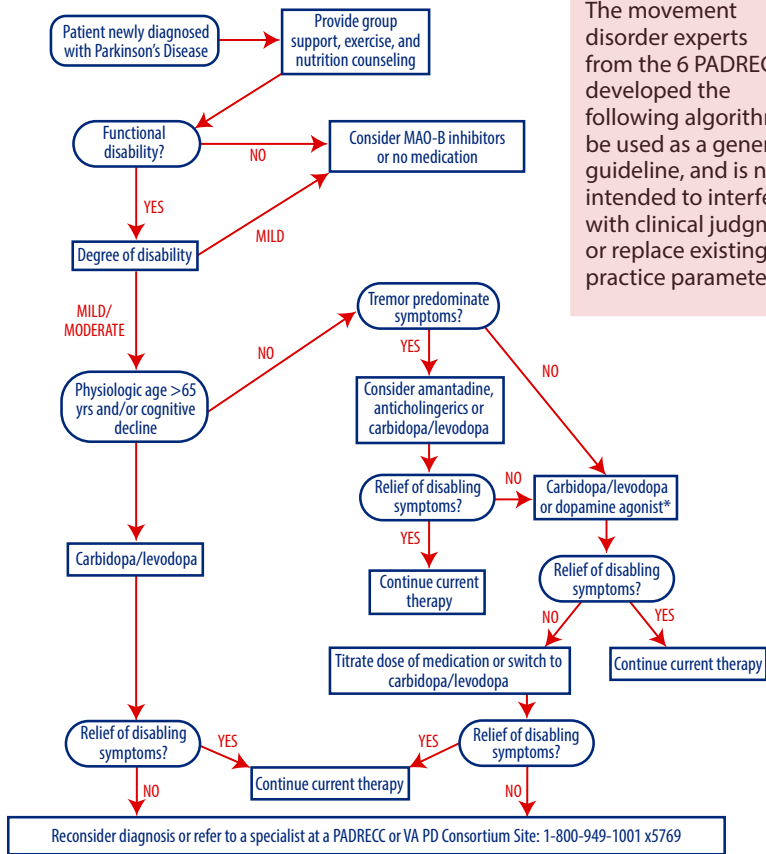


# Parkinson's Disease

## Quick Reference Guide for Initiating Therapy



**\* Assess for history of Impulse Control Disorder—type behaviors (pathological gambling, eating, spending, sexual, etc) and consider using other agents if significant history and/or concerns exist; monitor for ICD symptoms periodically during dopamine agonist therapy**

**Please contact one of the six Parkinson's Disease Research, Education and Clinical Centers (PADRECCs) for additional information or to arrange a consult appointment.**

### PADRECC/Consortium Hotline:

Houston PADRECC:  
 Philadelphia PADRECC:  
 Portland / Seattle PADRECC:  
 Richmond PADRECC:  
 San Francisco PADRECC:  
 West Los Angeles PADRECC:

**1-800-949-1001 x5769**

713-794-7841  
 215-823-5934 or 888-959-2323  
 503-721-1091 or 206-277-4560  
 804-675-5931 or 800-784-8381 x5931  
 415-379-5530  
 310-478-3711 x48001

[www.parkinsons.va.gov](http://www.parkinsons.va.gov)



U.S. Department of Veterans Affairs  
 Veterans Health Administration

Employee Education System  
 Updated May 2019

## Medications Used to Treat Parkinson's Disease

Medication Name <sup>®</sup> (generic name)	Start Dose	Typical Daily Dose	Common SEs
<b>Sinemet</b> (carbidopa/levodopa)	25/100 1/2 tab TID	25/100 1 tab TID	1
<b>Sinemet CR</b> (carbidopa/levodopa controlled– release)	25/100 1 tab TID	25/100 or 50/200 1-2 tabs TID	
<b>Parcopa</b> (carbidopa/levodopa orally disintegrating tablets)	25/100 1/2 tab TID	25/100 1 tab TID	
<b>Comtan</b> (entacapone)	1 (200mg) tab per Sinemet dose	1 (200mg) tab per Sinemet dose	1, urinary discoloration, diarrhea
<b>Stalevo</b> (carbidopa/levodopa/entacapone)	12.5/50/200 mg TID — or — 25/100/200 mg TID	25/100/200 mg TID	
<b>Requip</b> (ropinirole HCL)	0.25 mg TID	2.0-5.0 mg TID	1, impulse control disorder (ICD), edema, sedation
<b>Mirapex</b> (pramipexole)	0.125 mg TID	0.5-1.5 mg TID	
<b>Neupro</b> (Rotigotine)	2 mg TID	2mg/24 hours 4mg/24 hour	1,2, Application site reaction
<b>Azilect</b> (rasagiline)	0.5 mg daily	1 mg daily	1, 2
<b>Eldepryl</b> (selegiline)	5 mg	5 mg BID	1, 2, psychosis, insomnia
<b>Symmetrel</b> (amantadine)	100 mg daily	100 mg TID	pedal edema, psychosis, levido reticularis
<b>Artane</b> (trihexyphenidyl HCL)	1 mg BID	1 mg BID– 2 mg TID	Psychosis, cognitive decline, constipation, urinary retention, dry mouth blurred vision
<b>Cogentin</b> (benztropine mesylate)	0.5 mg BID	1-2 mg BID	

### Side Effect Key

**1:** Nausea, orthostatic hypotension, dyskinesias, hallucinations, sedation

**2:** Potential drug interactions with SSRIs (selective serotonin reuptake inhibitors)

**ICD:** Impulse Control Disorder (pathological/impulsive behaviors: gambling, spending, eating, sexual)